

# STANDARD




## Gastronomy H750



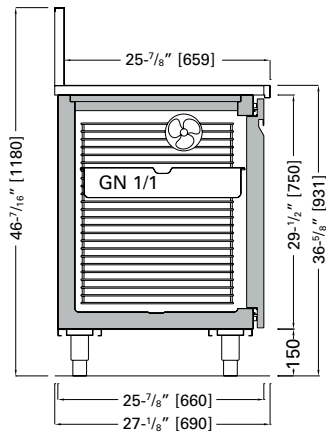
### H750 Refrigerated / Gastronomy Counters

Monolithic AISI 304 stainless steel module | rounded internal edges | insulation with ecological water-based polyurethane | insulated cap | stainless steel wire rack for 1/1 gastronomy trays and grids | polished stainless steel doors with micro hinges and gaskets with magnetic closure | 100 mm frame support for versions with an external condensing unit and 250/350 mm frame support for those with built-in condensing unit | ventilated refrigeration | system with R452a gas and natural defrosting for versions with remote condensing unit | removable condenser dust filter for modules with built-in condensing unit | condensation drainage directly into the base of counter | electronic touch control unit | stainless steel plinth with height-adjustable feet



 +34/+46 °





## Technical



- Ventilated
- R452a
- 1 / Hermetic
- Automatic / Hot Gas
- N.4 / R.H. 55% / 75°F
- 120 V / 1 ph / 60 Hz
- +34/+46 °F

## Data Sheet

\*Measurements are subject to revisions/updates, please refer to manufacturer's drawings at order confirmation



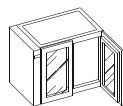
\*Crated dimensions and weight

Model	Dimensions	Weight	Max Pwr. Consumption	Avg Operating Consumption	Cooling Power/Expansion	GAS
Code	LxDxH - Inches	Lbs	W / A	KW/H	BTU / °F	Type
 SGBPVF1P6H7TI	31-1/2 X 27-1/8 X 46-7/16	132.28	220/1,6	0,13	511.82 / 3.2	R452a
	31-9/16 X 34-1/4 X 57-7/8	275.58 Cabinet + Crate				
 SGBPVF2P6H7TI	45-1/4 X 27-1/8 X 46-7/16	176.37	220/1,7	0,14	989.52 / 3.2	R452a
	52-3/8 X 34-1/4 X 57-7/8	374.78 Cabinet + Crate				
 SGBPVF3P6H7TI	62-7/8 X 27-1/8 X 46-7/16	220.46	300/2,3	0,18	1,364.86 / 3.2	R452a
	70-1/16 X 34-1/4 X 57-7/8	473.99 Cabinet + Crate				

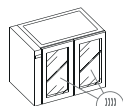
\*\*Cabinet height measurement includes Type C countertop backsplash; Cabinet height without backsplash is 36-5/8" tall.

\*\*Overall length dimension may vary due to size of condensing unit tray. Please refer to manufacturer's drawings at order confirmation for final dimensions.

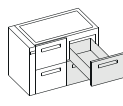
## Optionals:



SSGR01  
Double-Paned  
Doors



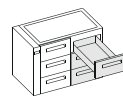
SSCCR02  
Heated  
Glasses



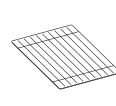
CSCR06  
Double-Drawers  
1/2-1/2



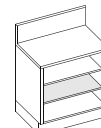
CSCR07  
Double-Drawers  
1/3-2/3



CSCR08  
Triple Drawers



CIR04F  
Plastic-Coated  
Grille



CIN20-23  
Intermediate  
Solid Shelf



CIM08  
Casters